

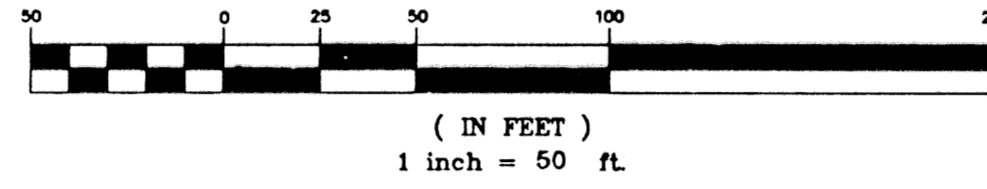
BRIARCLIFF AT WOODFIELD COUNTRY CLUB

BEING A REPLAT OF A PORTION OF TRACT T-5 AND TRACT L-10-A
OF "WOODFIELD COUNTRY CLUB" AS RECORDED IN PLAT BOOK 54, PAGE 79
OF THE PUBLIC RECORDS OF PALM BEACH COUNTY, FLORIDA
AND BEING A PART OF SECTION 4, TOWNSHIP 47 SOUTH, RANGE 42 EAST
CITY OF BOCA RATON, PALM BEACH COUNTY, FLORIDA

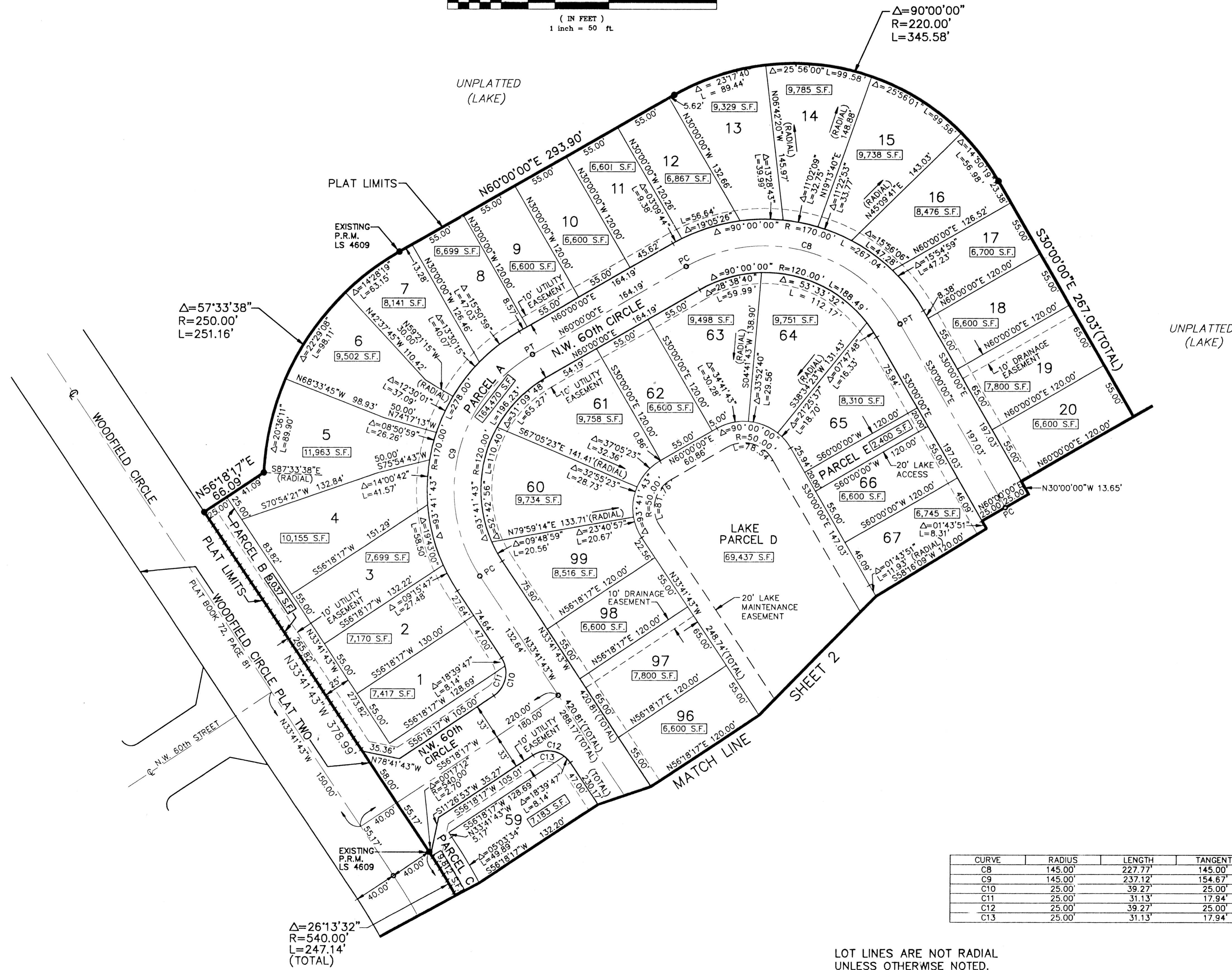
SHEET NO. 3 OF 3

GEE & JENSON
ENGINEERS - ARCHITECTS - PLANNERS, INC.
WEST PALM BEACH, FLORIDA
JUNE 1995

GRAPHIC SCALE



STATE OF FLORIDA
COUNTY OF PALM BEACH
This plat was filed for
record at _____ W. this _____ day
of _____ 1995, and duly
recorded in Plat Book No. _____
on Pages _____ thru _____
DOROTHY H. WILKEN
Clerk Circuit Court
By _____ D. C.



CURVE	RADIUS	LENGTH	TANGENT	CHORD	BEARING	DELTA
C8	145.00'	227.77'	145.00'	205.06'	S75°00'00"E	90°00'00"
C9	145.00'	237.12'	154.67'	211.57'	N13°09'09"E	93°41'43"
C10	25.00'	39.27'	25.00'	35.36'	S11°18'17"W	90°00'00"
C11	25.00'	31.13'	17.94'	29.15'	S20°38'10"W	71°20'13"
C12	25.00'	39.27'	25.00'	35.36'	N78°41'43"W	90°00'00"
C13	25.00'	31.13'	17.94'	29.15'	N88°01'36"W	71°20'13"

LOT LINES ARE NOT RADIAL
UNLESS OTHERWISE NOTED.

SUBDIVISION # Briarcliff At
BOOK 75 Woodfield C
PAGE 82
FLOOD MAP #
QUAD # ZONING
SE ZIP CODE
PUD NAME Ciboca Raton

COMPUTED
DRAWN DFB
CHECKED
APPROVED
JOB NO. 93-330.50

Δ=26°13'32"
R=540.00'
L=247.14'
(TOTAL)